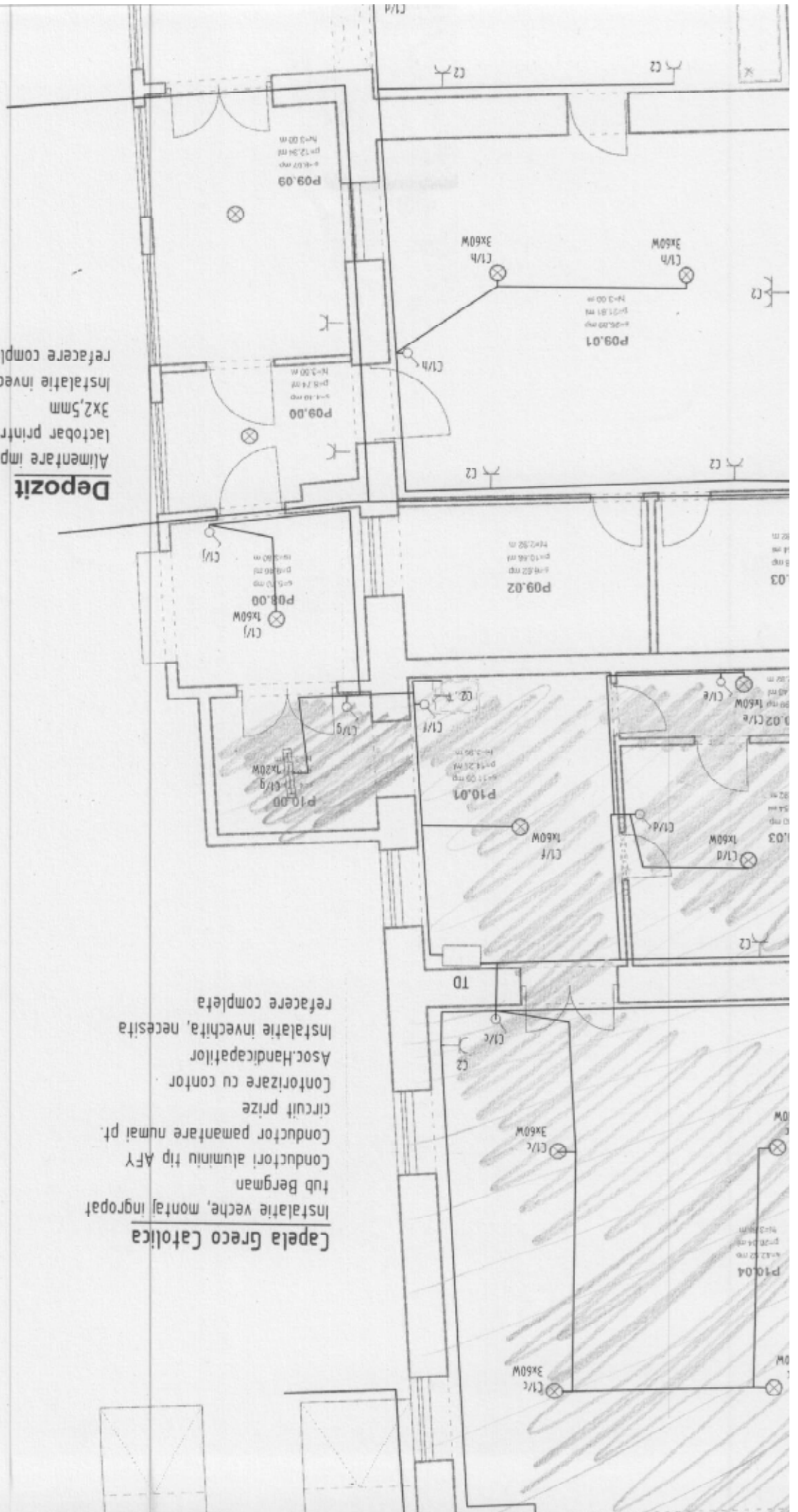
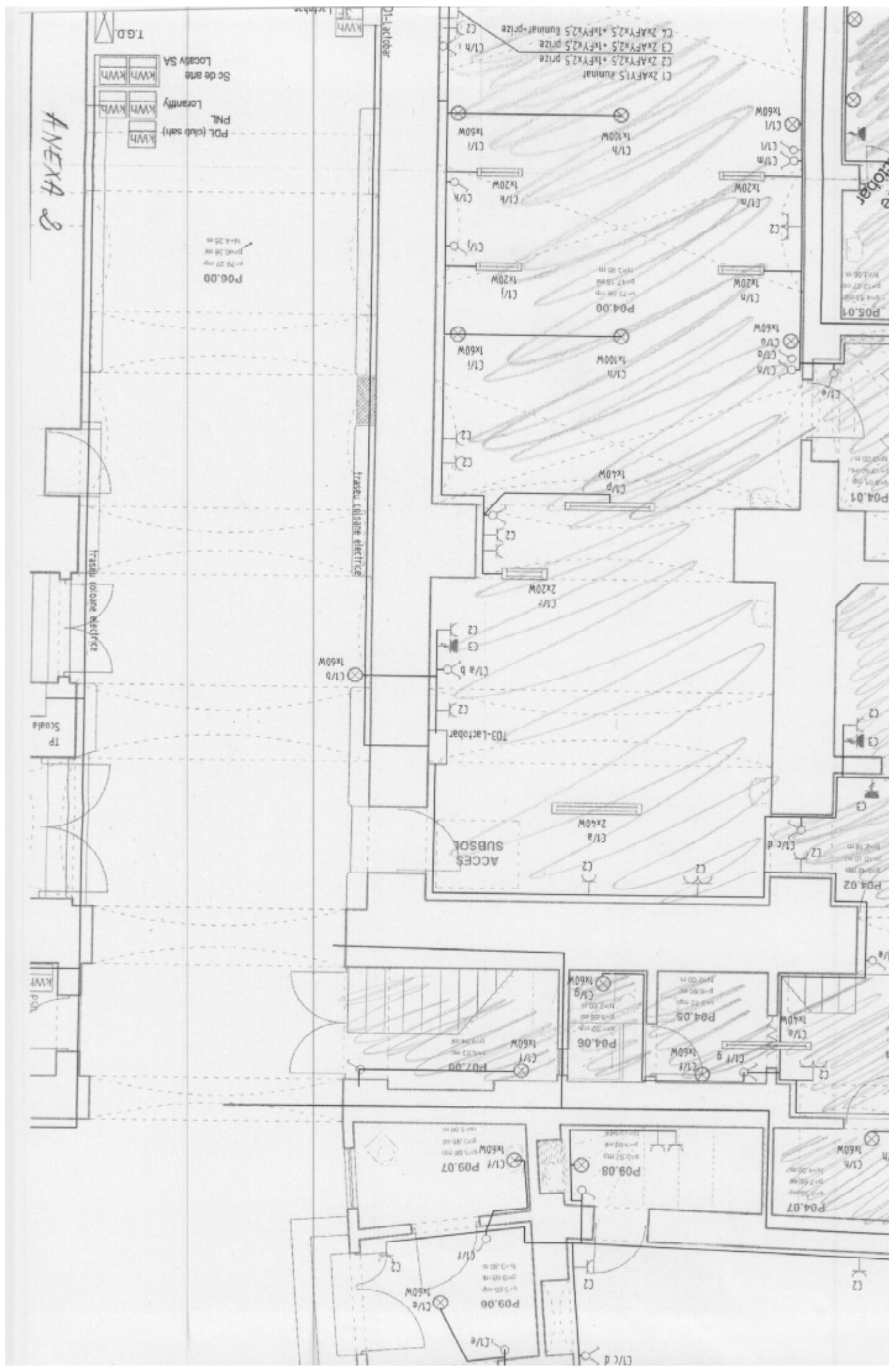


ANEXA 2

**Depozit**  
Alimentare improvizata, din  
lacto-bar print-un prelungitor  
3x2,5mm  
Instalatie invecchita, necesita  
refacere completa

**Capela Greco Catolica**  
Instalatie veche, montaj ingropat  
tub Bergman  
Conductori aluminiu tip AFY  
Conductor pamantare numai pt.  
circuit prize  
Contorizare cu contor  
Asoc.Handicapator  
Instalatie invecchita, necesita  
refacere completa





ANEXA 2

T.G.D.  
Locativ SA  
PNL  
Locantiv

P06.00  
m=27.27 m  
m=26.26 m  
m=24.25 m

traseu coloane electrice

traseu coloane electrice

Scoda  
TP

KWF  
P01

C1 2xAFYx2,5 + kFYx2,5 prize  
C2 2xAFYx2,5 + kFYx2,5 prize  
C1/4 1

P04.00  
m=27.26 m  
m=27.26 m  
m=27.26 m

103-Lactobar  
C1/a b  
C2  
C3

ACCES  
SUBSOL  
C1/a  
2x40W  
C2

P04.05  
m=27.26 m  
m=27.26 m  
m=27.26 m

P04.06  
m=27.26 m  
m=27.26 m  
m=27.26 m

P09.08  
m=27.26 m  
m=27.26 m  
m=27.26 m

P09.07  
m=27.26 m  
m=27.26 m  
m=27.26 m

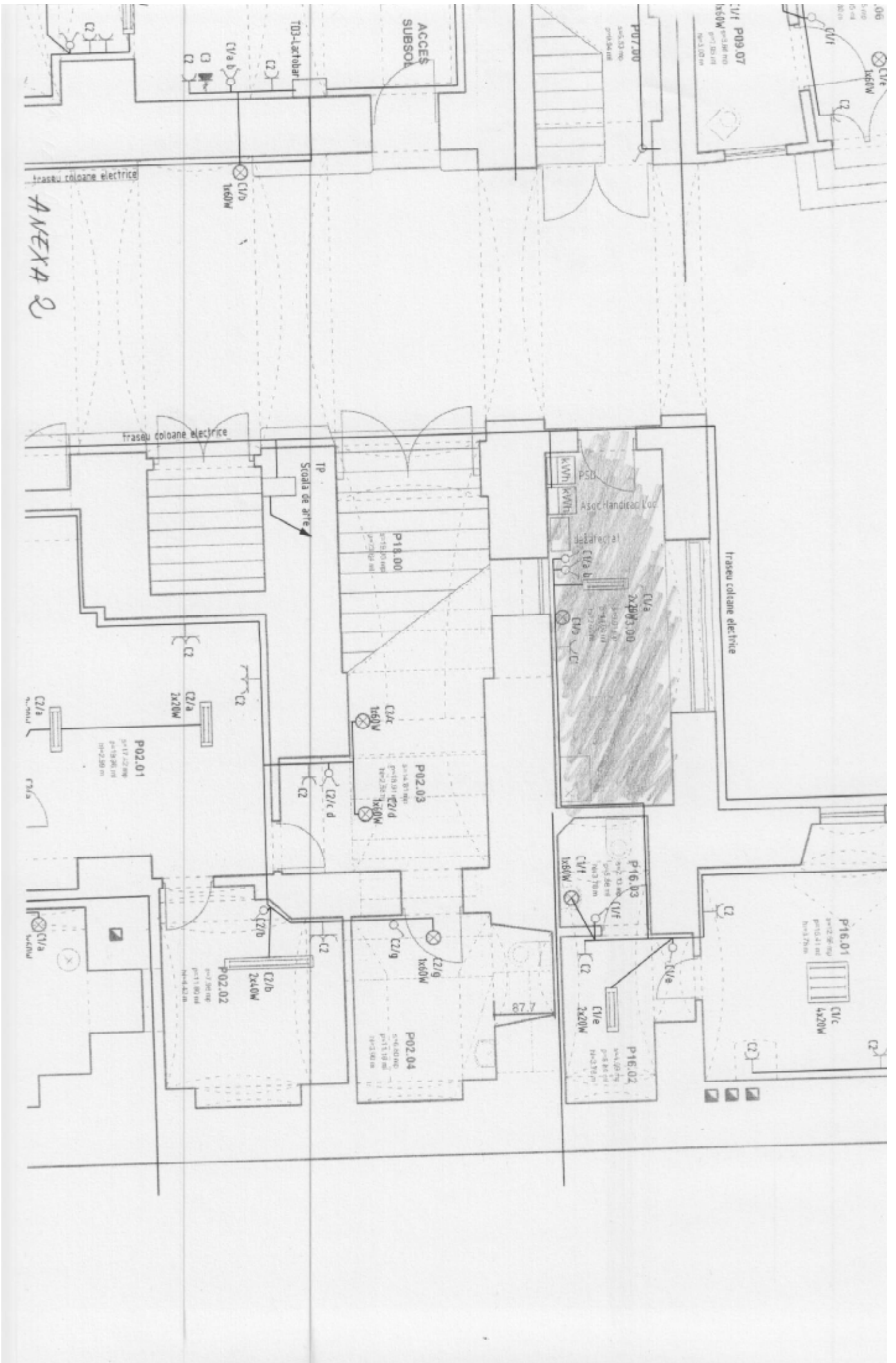
P09.06  
m=27.26 m  
m=27.26 m  
m=27.26 m

P04.07  
m=27.26 m  
m=27.26 m  
m=27.26 m

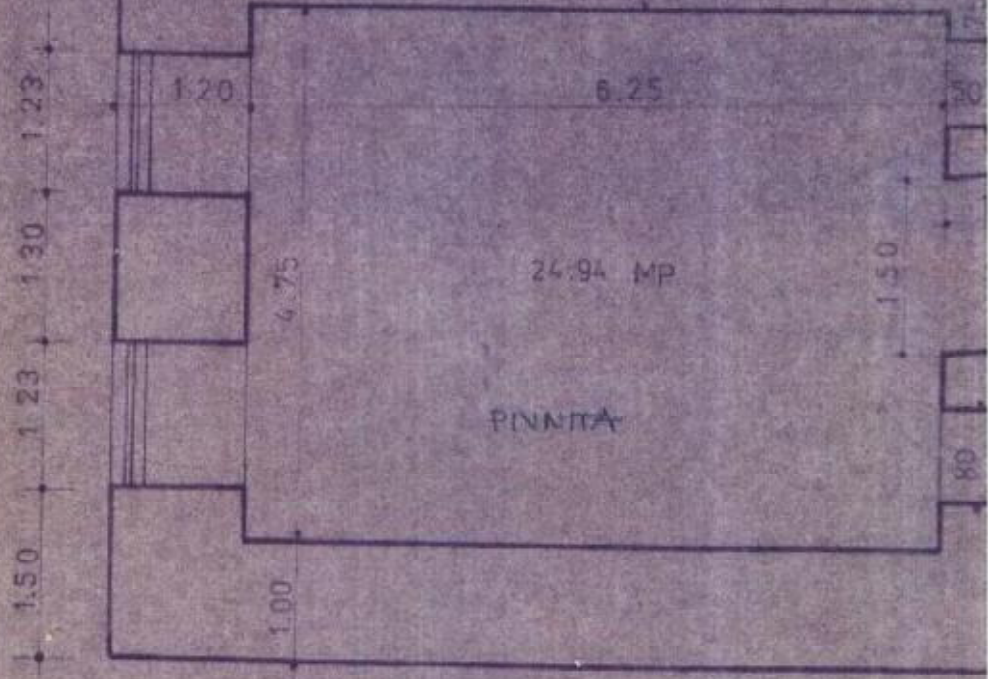
P04.01  
m=27.26 m  
m=27.26 m  
m=27.26 m

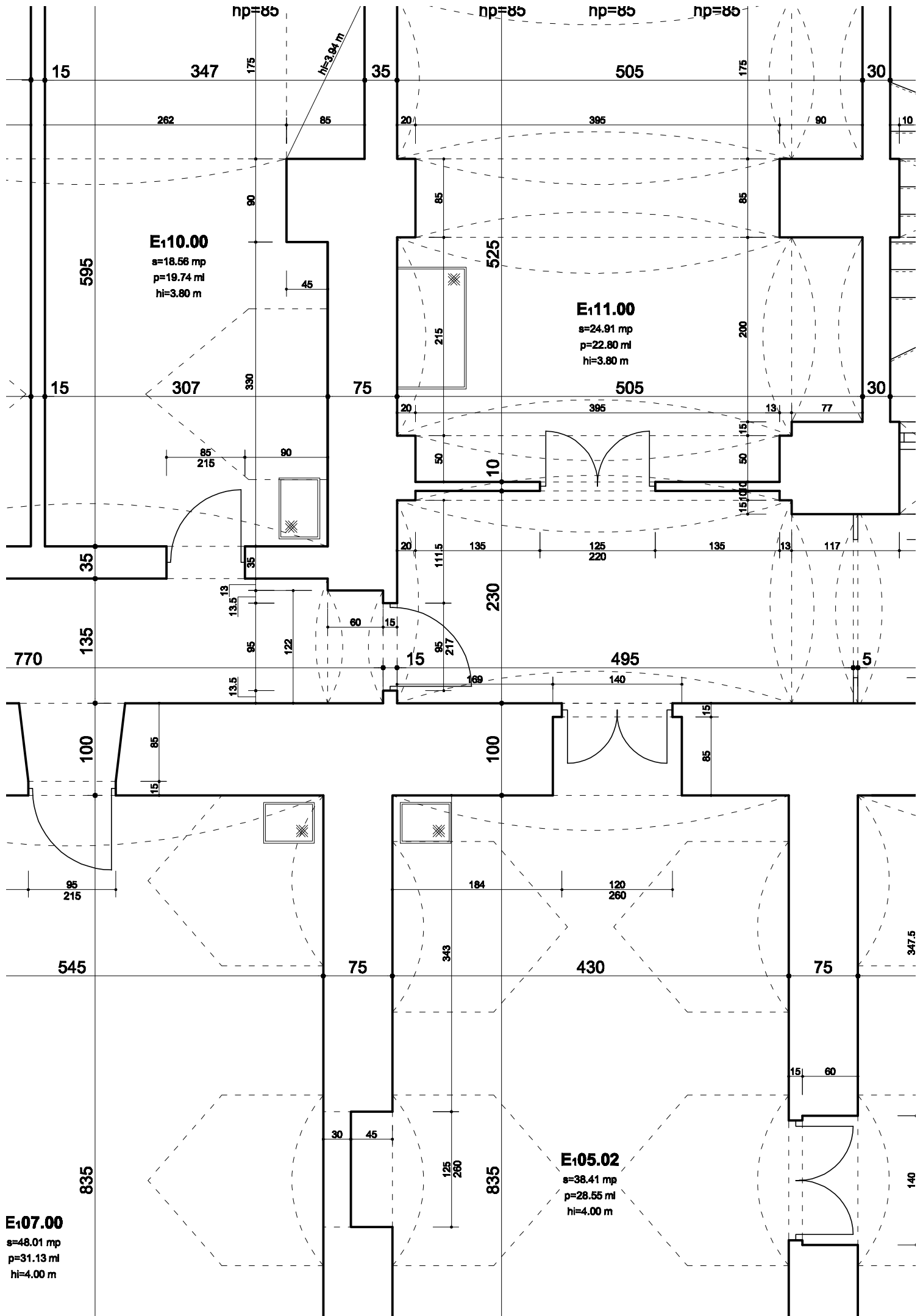
P04.02  
m=27.26 m  
m=27.26 m  
m=27.26 m

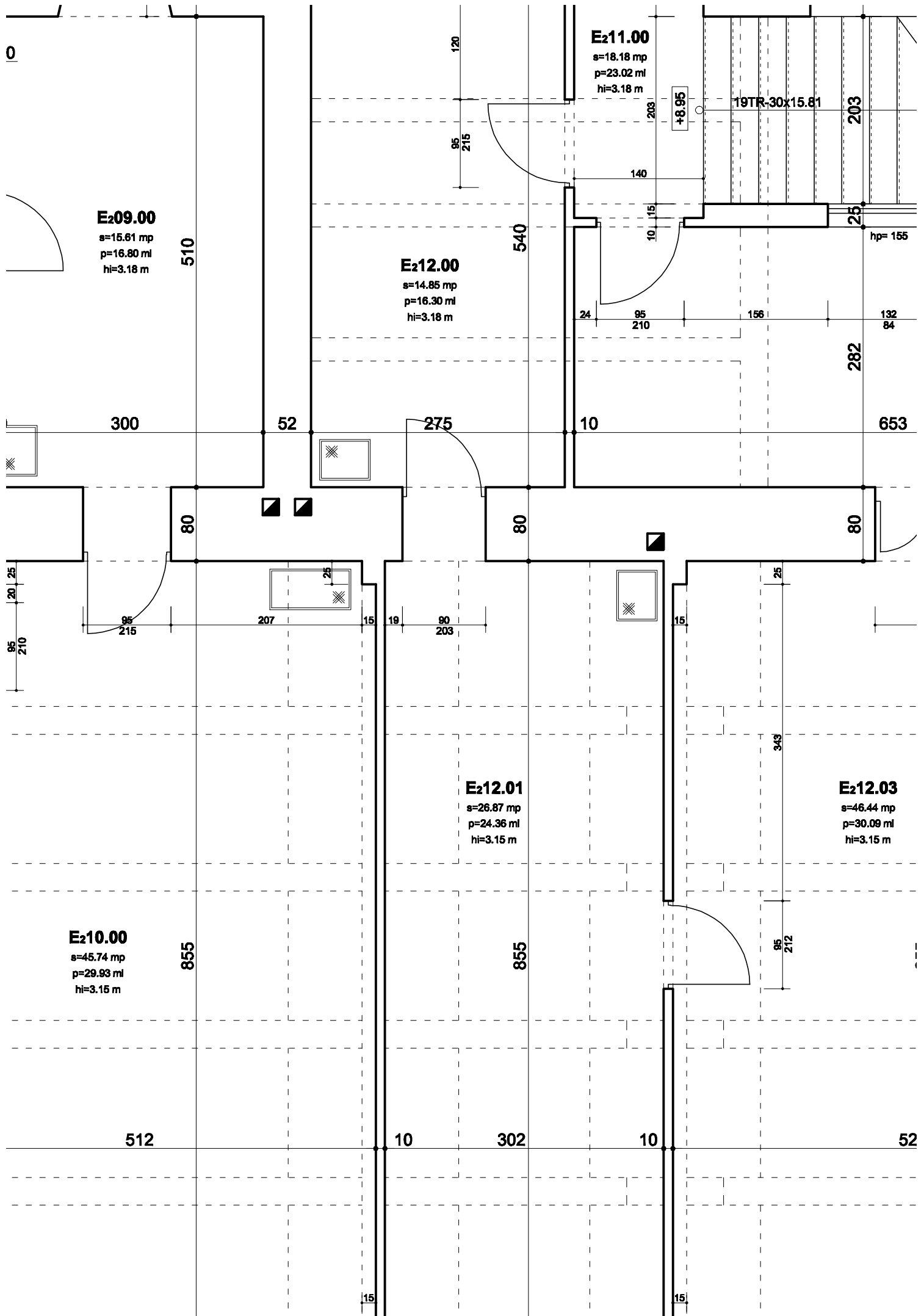
P05.01  
m=27.26 m  
m=27.26 m  
m=27.26 m

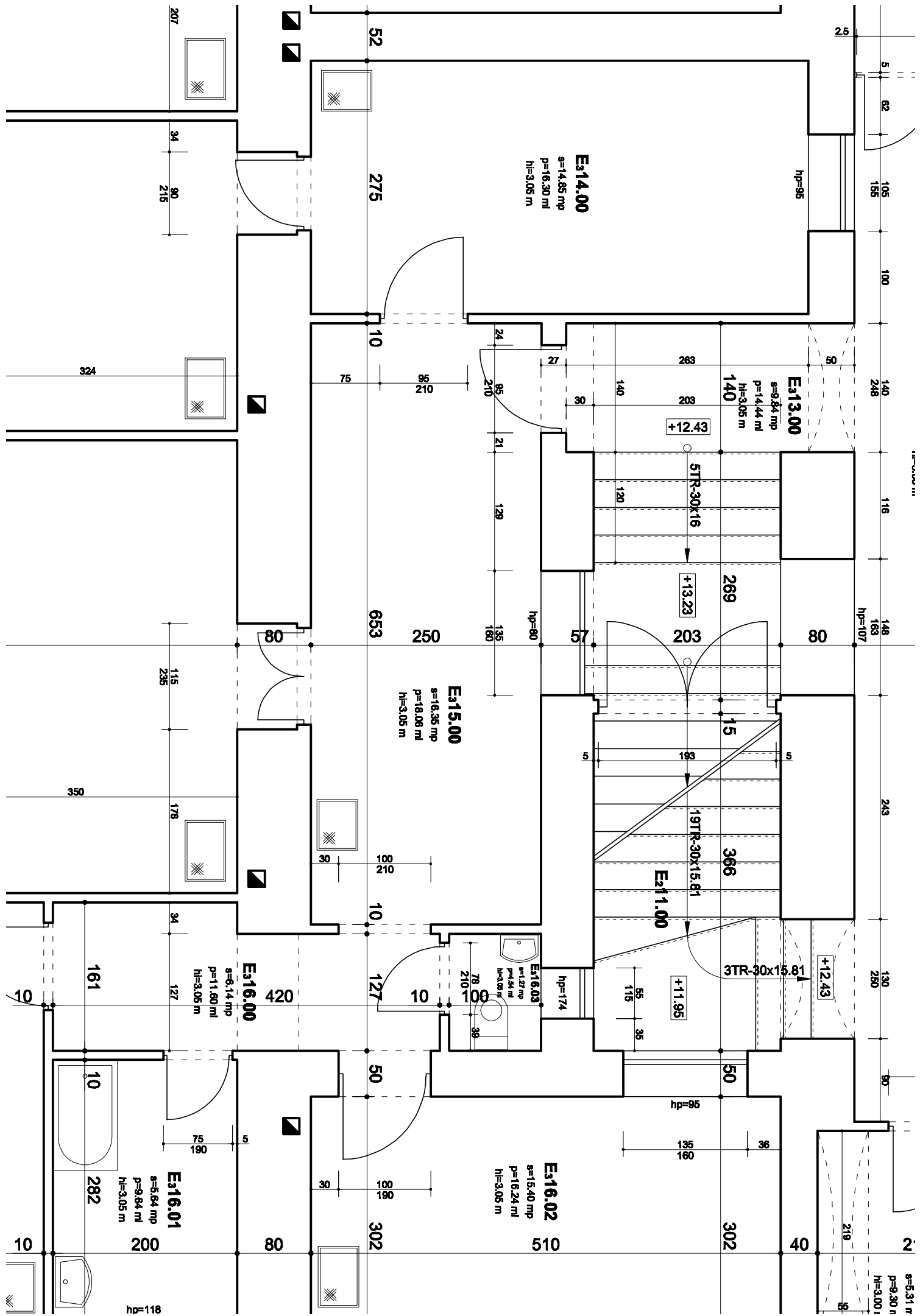


PTA TANJABIRI









1:1000000 111

**E314.00**  
 s=14,85 mp  
 p=16,30 ml  
 h=3,05 m

**E313.00**  
 s=9,84 mp  
 p=14,44 ml  
 h=3,05 m

**E315.00**  
 s=16,35 mp  
 p=18,08 ml  
 h=3,05 m

**E316.00**  
 s=6,14 mp  
 p=11,80 ml  
 h=3,05 m

**E316.01**  
 s=5,84 mp  
 p=9,84 ml  
 h=3,05 m

**E316.02**  
 s=15,40 mp  
 p=16,24 ml  
 h=3,05 m

**E211.00**

**E316.03**  
 s=1,27 mp  
 p=4,54 ml  
 h=3,05 m

s=5,31 r  
 p=9,30 n  
 h=3,00 j

51TR-30x16

19TR-30x15,81

3TR-30x15,81

hp=95

hp=80

hp=174

hp=95

hp=107

hp=118

+12,43

+13,23

+11,95

+12,43